

Ifo Spira Kits

WELS/WATERMARKED PRODUCT CODE:

- **6261 Ifo Spira**
(WELS & WaterMark certified for pan and cistern. Used in all Spira kits)



626100009



108.00.0X.XX*



108.00.XX.XX*

* X is a placeholder for the numerical kit product code with selected accessory configuration. Refer to galvinengineering.com.au for full list of kit codes.

SPECIFICATIONS

- Rimless flush.
- Free standing toilet suite, suitable for installation into a corner.
- Functions as a combined WC and backrest solution. The cistern has been independently tested via an all angles thrust test to function as a backrest in AS1428.1 applications.
- 460mm increased height toilet pan (excluding toilet seat).
- Allows for undisturbed coving seal.
- Variety of seat styles and support arm configurations available.
- Pan load rated to 400 kg – support arms rated to 150kg total load (75kg per arm).
- Fully glazed on back and inside rim to avoid bacteria growth.

IMPORTANT:

*When installing with support arms, the toilet must be fixed firmly to the floor with the floor fixing screws or the floor bracket (included in kits).

WARNINGS: Special attentions to be paid on notes, photos, images, or drawings of assembly steps marked with the warning symbol.



CONTENTS

1 TECHNICAL DATA2

2 TOOLS REQUIRED – NOT SUPPLIED2

3 PRE-INSTALLATION.....3

 3.1 AS 1428.1 ACCESSIBLE SET OUT3

 3.2 RECOMMENDED MINIMUM SET OUT.....3

 3.3 MINIMUM SET-OUT.....3

 3.4 45° CORNER SET UP – WITHOUT ARMS4

 3.5 45° CORNER SET UP – WITH ARMS.....4

 3.6 WATER INLET CONNECTION4

4 DIMENSIONS5

5 INSTALLATION5

 5.1 FLOOR MOUNTING INSTRUCTIONS5

 5.1.1 DIRECT FLOOR MOUNTING WITH FLOOR FIXINGS6

 5.1.2 FLOOR MOUNTING WITH FLOOR BRACKET7

 5.2 REAR HOLE COVER INSTALLATION8

 5.3 INSTALLING SEAT AND SUPPORT ARMS.....9

 5.4 REPLACING THE FLUSH BUTTON.....9

 5.5 ACCESSING INTERNAL CISTERN COMPONENTS.....9

6 TROUBLESHOOTING11

7 SPARE PARTS.....12

 7.1 SEAT AND SUPPORT ARM VARIANTS13

8 KIT CODES MATRIX14

9 CARE INSTRUCTIONS15

 9.1 GENERAL CARE INSTRUCTIONS15

 9.2 INSTALLING IFO FRESH STICKS15

10 WARRANTY15

1 TECHNICAL DATA

Inlet	G1/2 male	
Outlet	DN100 DWV PC Pan Collar	
Working Pressure Range (kPa)	Min	50
	Max	500
Nominal Flow Rate (LPM)	4.4 Full Flush / 3.1 Half Flush	
Construction	Ceramic	
Finish	White	
NOTE: Galvin Engineering continually strive to improve their products. Specifications may change without notice.		

2 TOOLS REQUIRED – NOT SUPPLIED

<ul style="list-style-type: none"> - Phillips-head Screwdriver - T25 torx key (Z91960) - Suitable bathroom sealant and gun 	<ul style="list-style-type: none"> - For direct floor fixing: 4x Rawl plugs to match 12G screw and floor type, 8mm drill. - For floor bracket fixing: 4x M8 rods with nuts and washers, 3mm drill.
---	--

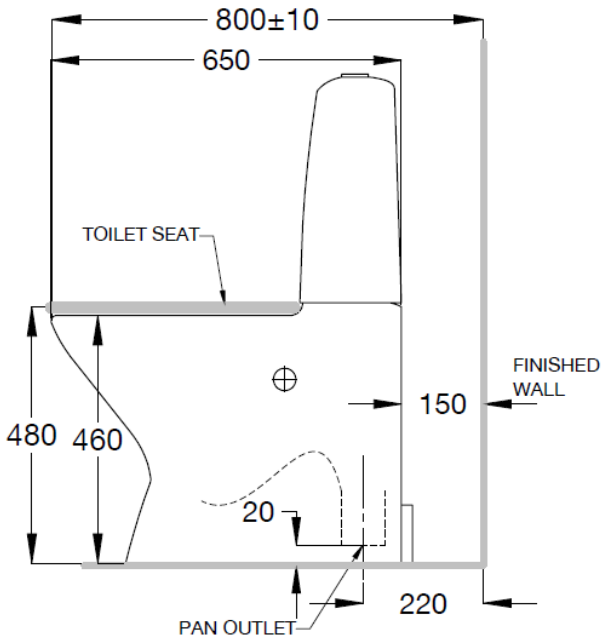
3 PRE-INSTALLATION



Notes:

Before installation, all lines must be flushed. Galvin Engineering recommends the installation of strainers and pressure reducing valves (when necessary) to ensure clean consistent supply. Debris or poor water quality could affect the performance of the unit.

3.1 AS 1428.1 ACCESSIBLE SET OUT



AS 1428.1 APPLICATION NOTES

- Minimum distance from wall for performance based AS1428.1 solutions is 150mm.
- The pan sits 460mm above the floor with no seat installed, and 480mm with a seat.
- The cistern has been independently tested via an all angles thrust test to function as a backrest in AS1428.1 applications.



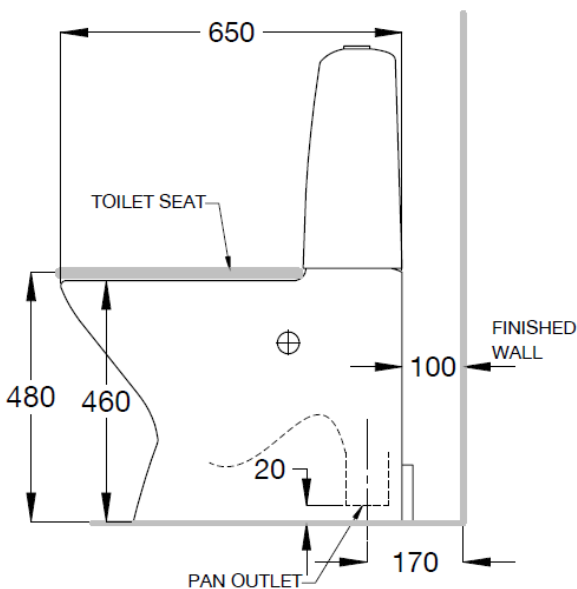
Note: Toilet must be fixed to the floor using floor screws or floor bracket when used as a backrest OR when used with support arms.

- Support arms are load rated to 150kg of centralised weight, or 75kg per arm.



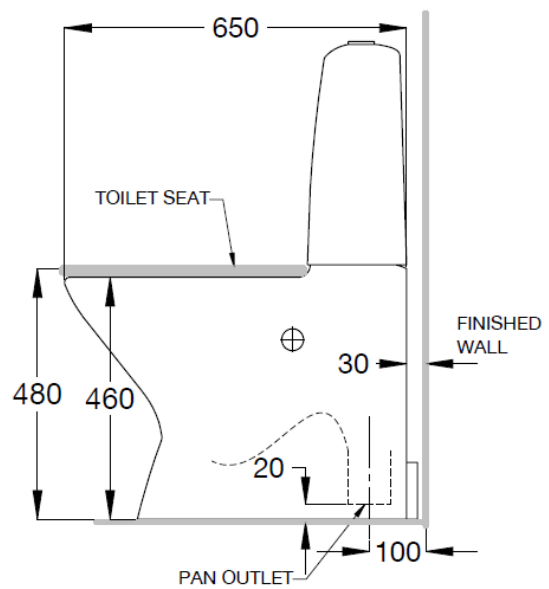
Note: Supplied Galvin fitting kits must be used to achieve support arm load ratings.

3.2 RECOMMENDED MINIMUM SET OUT



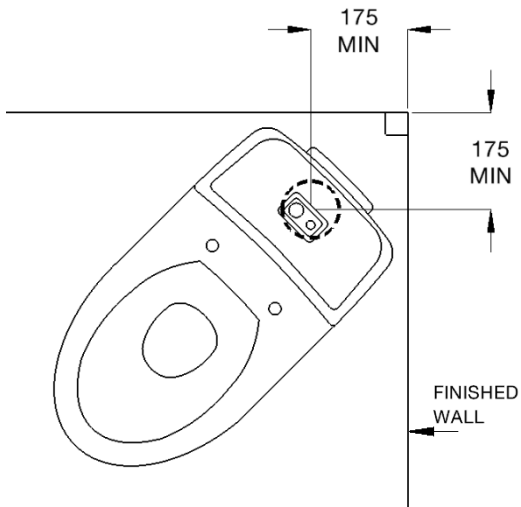
100mm distance from wall is recommended to allow for cleaning and access to rear cover for inspection.

3.3 MINIMUM SET-OUT

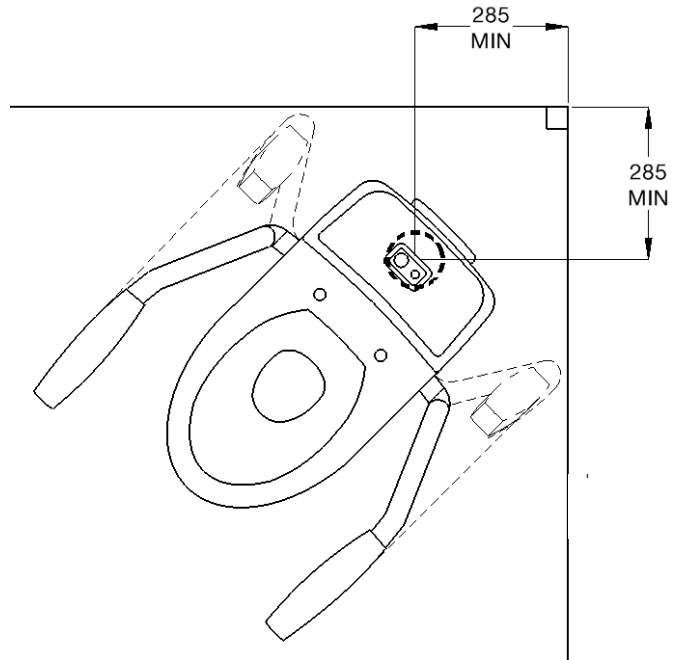


Note: at this set-out the rear cover will need to be fitted with silicon before toilet placement and will not be removable for inspection.

3.4 45° CORNER SET UP – WITHOUT ARMS



3.5 45° CORNER SET UP – WITH ARMS

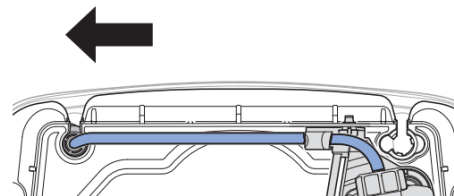


3.6 WATER INLET CONNECTION



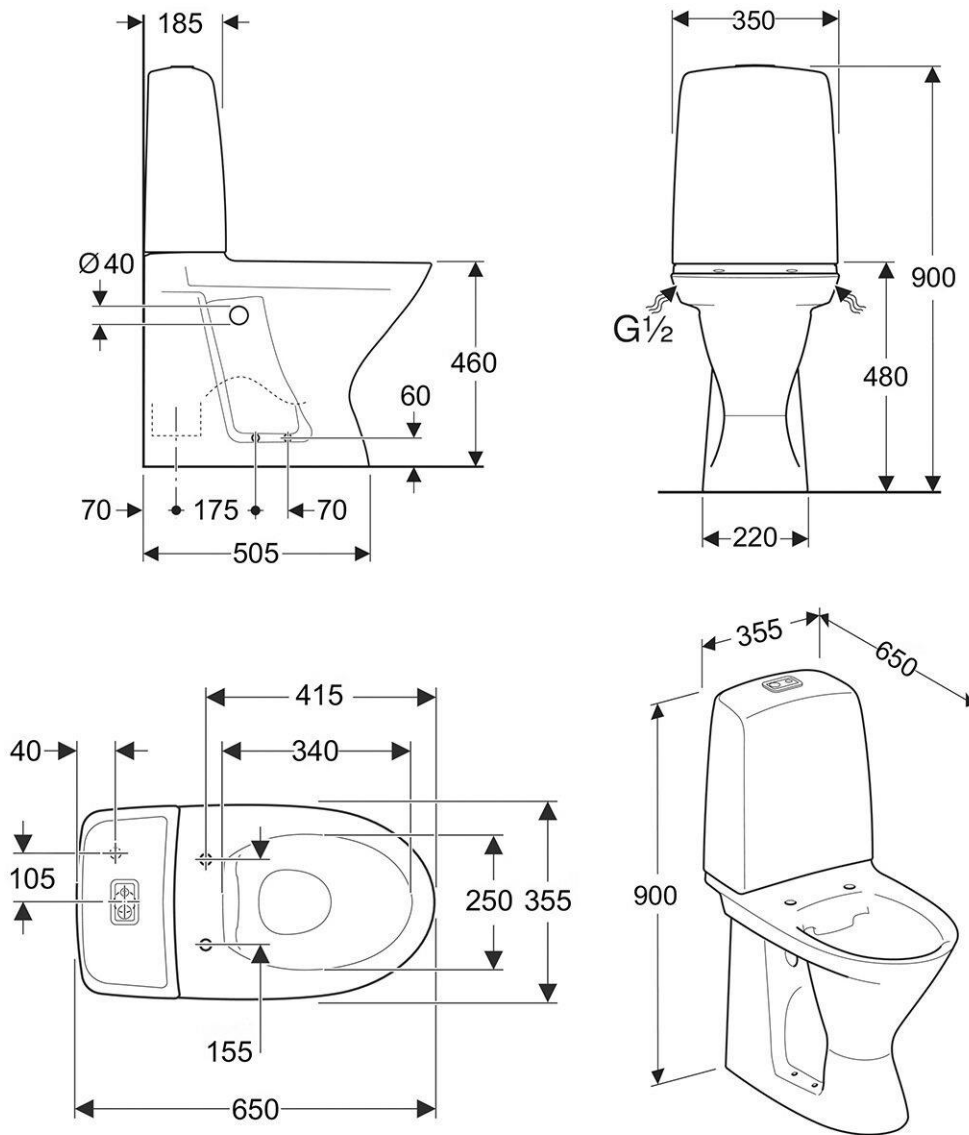
As supplied, the water inlet connection is a G1/2 male connector on the right hand side of the cistern.

It can be switched to the left side by removing the cistern cover (see 5.5) and transferring the inlet hose to the left hand slot.



Flush lines before connecting.

4 DIMENSIONS



5 INSTALLATION

INSTALLATION COMPLIANCE: Galvin Engineering products must be installed in accordance with these installation instructions and in accordance with AS/NZS 3500, the PCA and your local regulatory requirements. Water and/or electrical supply conditions must also comply to the applicable national and/or state standards. Failing to comply with these provisions shall void the product warranty and may affect the performance of the product.

5.1 FLOOR MOUNTING INSTRUCTIONS

Galvin Engineering recommends always fixing the toilet to the floor, either with the floor fixing screws or with the Galvin floor bracket. The floor bracket is recommended for vinyl flooring.

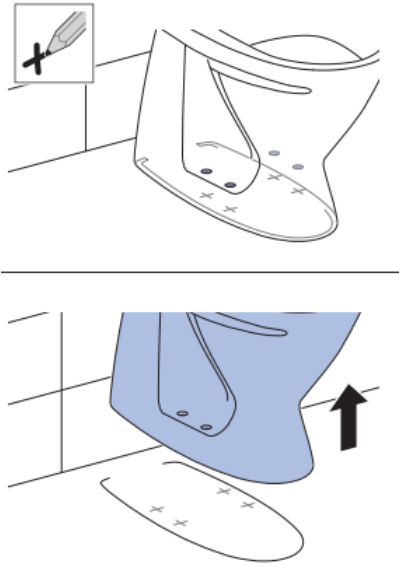
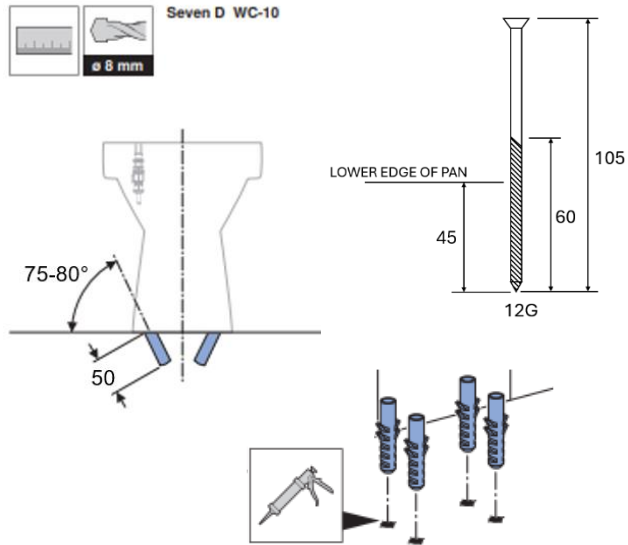

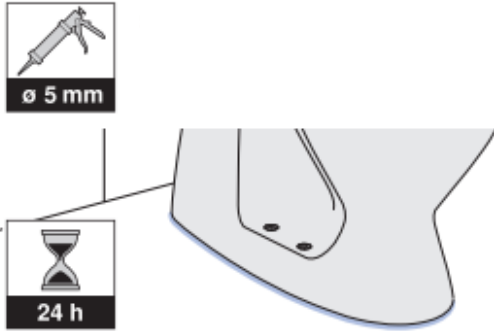


Note: Floor fixings or floor bracket **must** be used if the toilet is being used in AS1428.1 applications or if it has, or may in future have, support arms installed.

5.1.1 DIRECT FLOOR MOUNTING WITH FLOOR FIXINGS

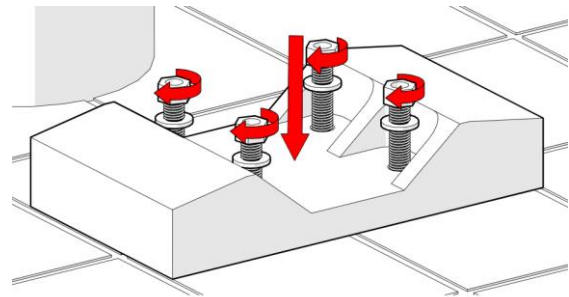
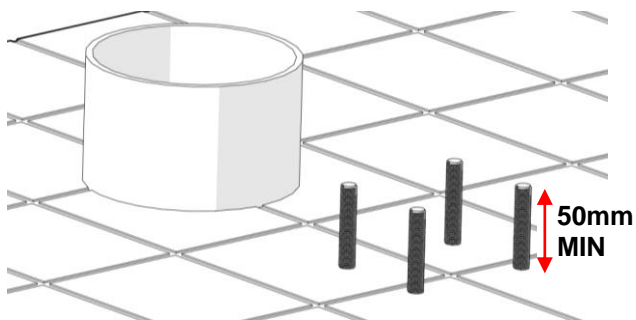
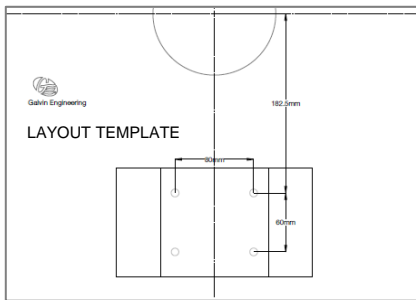
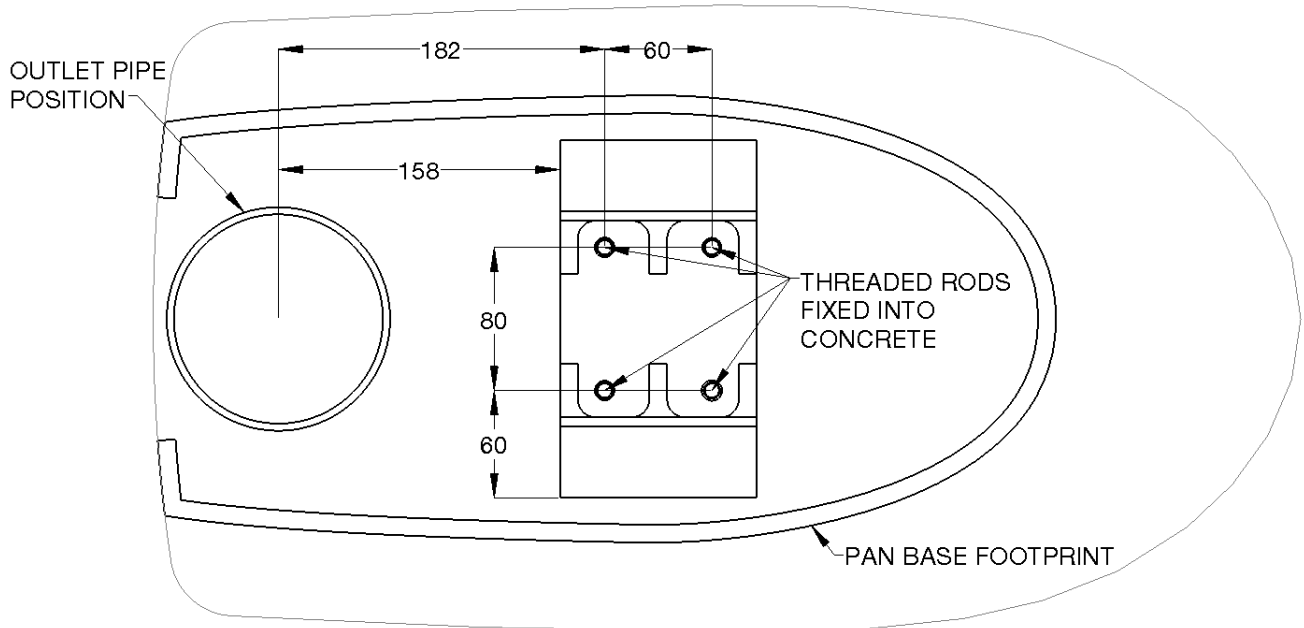


Note: Provided pan screws are 12G x 105mm long with an exposed thread length of 45mm. Pan screws must be secured into the concrete slab using suitable rawl plugs to achieve required strength and structural integrity. A site assessment must be carried out to assess the suitability of floor screws before use. If it is not possible to fix into concrete or fully waterproof the floor, the floor bracket should be used.

 <ol style="list-style-type: none"> Place toilet in final location and mark edges and fixing holes as shown. Remove toilet. 	 <ol style="list-style-type: none"> Drill 8mm fitting holes at angle and depth as shown. Install rawl plugs (not supplied). Rawl plugs must be matched to substrate and suitable for a 45mm screw protrusion from pan. <p>! Note: Rawl plugs must be fitted into concrete slab.</p>
 <ol style="list-style-type: none"> Install toilet in place and fit screws. Hand tighten with screwdriver. Cover screw heads with provided white caps. <p>! Do not overtighten screws as this may cause cracks to the ceramic.</p>	 <ol style="list-style-type: none"> Apply sealant around edge. <p>! Note: If using a wall set-out distance less than 100mm, the rear hole cover must be installed with silicon before pan is put into position.</p>

5.1.2 FLOOR MOUNTING WITH FLOOR BRACKET

BRACKET LAYOUT DIMENSIONS



1. Use layout template provided to install 4xM8 threaded rods (not supplied) into concrete before waterproofing.

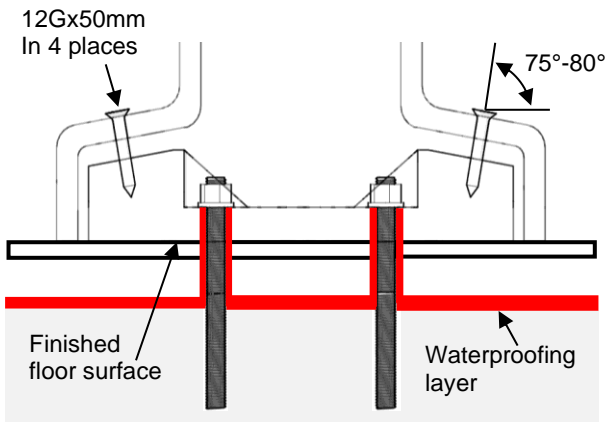


Rods must be firmly embedded with a minimum combined pull out force of 240kg.

Rods should protrude a minimum of 50mm above the finished floor surface.

2. Complete floor build up including waterproofing layers.

3. Mark rod positions on floor bracket and drill.
4. Fit bracket onto threaded rods and secure tightly with nuts and washers (not supplied).
5. Trim rods to approx 5mm above nut position.



6. Install toilet in place. Pre-drill 3mm pilot holes at an angle as shown into bracket through pan holes
7. Secure screws through the pan holes and into the bracket. Hand tighten until pan is secure.



Do not overtighten screws as this may cause cracks to the ceramic.

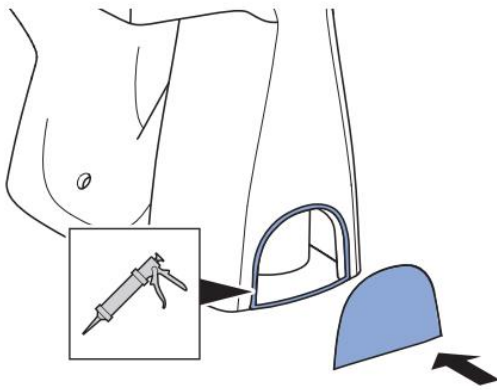


8. Cover screw heads with provided white caps.
9. Apply sealant around edge.
10. Install rear cover following instructions below.



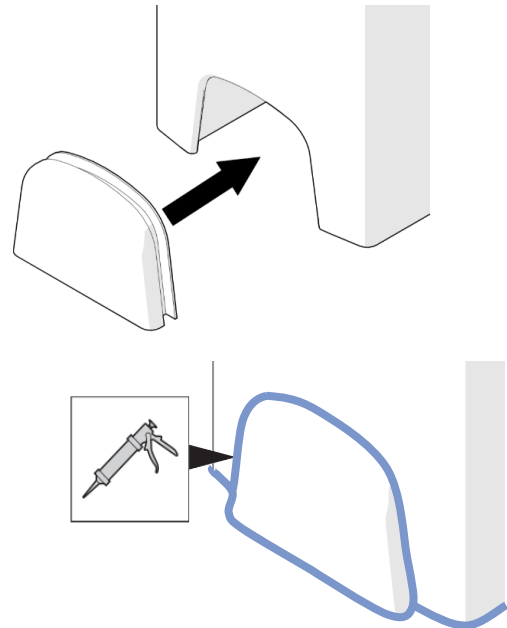
Note: If using a wall set-out distance less than 100mm, the rear cover must be installed with sealant before pan is put into position.

5.2 REAR HOLE COVER INSTALLATION



Flat Cover Plate (supplied with 62610009):

1. Apply sealant to rear opening, fit cover plate and press to seal.
2. Apply further sealant around edges and allow to fully cure.



Rubber Moulded Cover (included in all 108.00 kits):

3. Fit rubber cover into opening, ensuring toilet walls sit within the fitting groove.
4. Apply sealant around all edges and allow to fully cure.



Note: If using a wall set-out distance less than 100mm, the rear hole cover should be installed with sealant before pan is put into position.

5.3 INSTALLING SEAT AND SUPPORT ARMS

Follow installation instructions provided with individual items for installing seats and support arms.



Note: When using a Pressalit BD1999 seat with support arms, the included Galvin fitting kit **108.99.00.90** must be used during installation to achieve product load ratings.

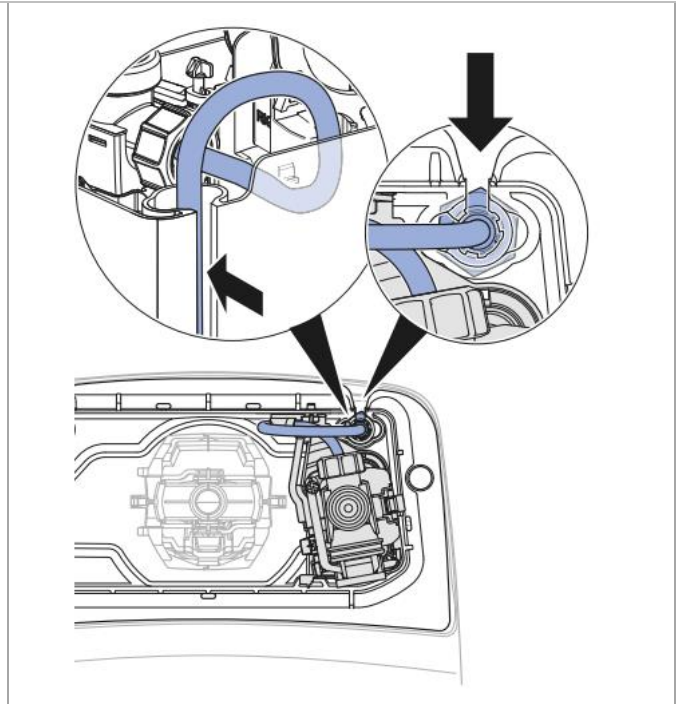
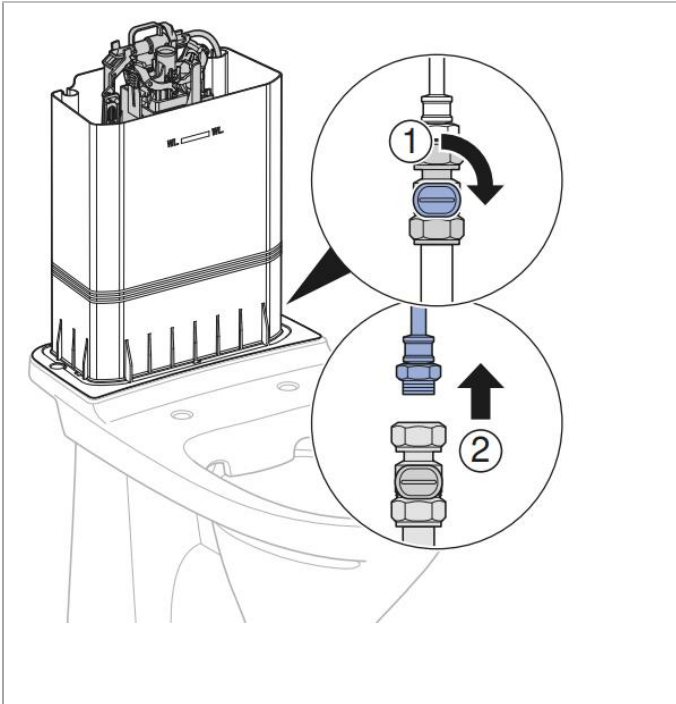
Please note the only Ifo seats suitable for use with support arms are the Spira Soft Close variants.

5.4 REPLACING THE FLUSH BUTTON

<ol style="list-style-type: none"> 1. To remove the flush button lift it by the hinge and unscrew the cover rod either by hand or with the cistern key (Item Z91960). 2. Transfer the cover rod to the new flush button and repeat the steps in reverse to fit. 		

5.5 ACCESSING INTERNAL CISTERN COMPONENTS

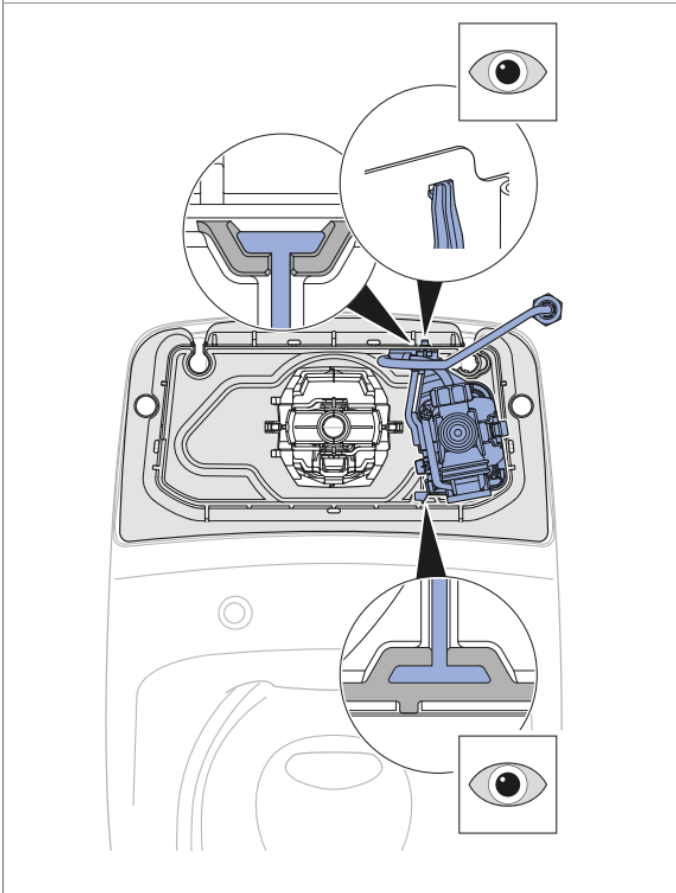
<ol style="list-style-type: none"> 1. Remove the flush button and cover rod following the instructions in section 5.4. 2. Unscrew cistern fixing screws and carefully lift off the ceramic shroud. 	<p>Removing Outlet valve:</p> <ol style="list-style-type: none"> 1. Twist and lift outlet valve to remove. <p>Reinstall outlet valve by sliding unit straight down into seat until it clicks.</p>



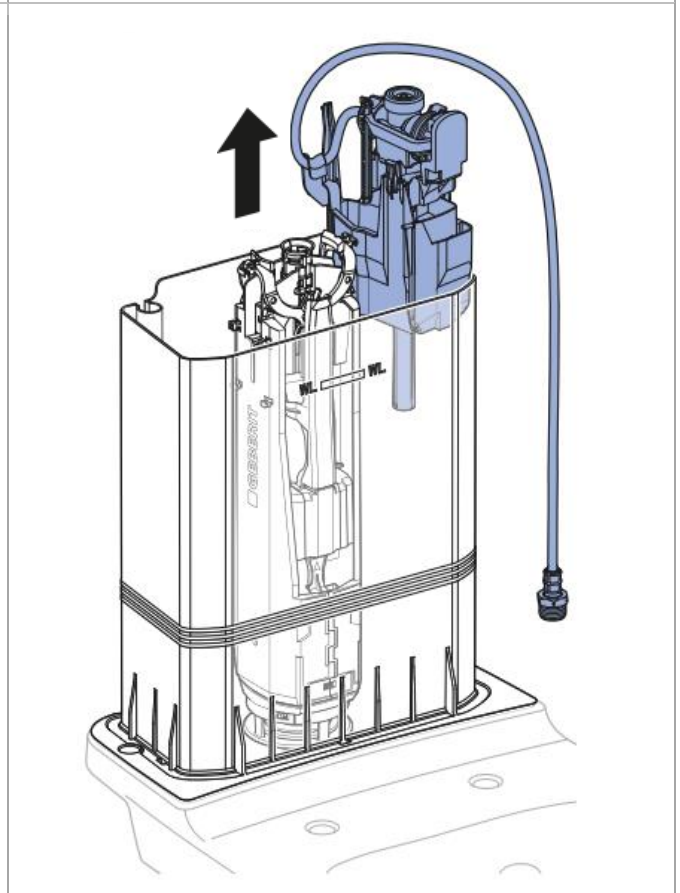
Removing Inlet valve:

1. Disconnect water supply to inlet.

2. Disconnect inlet hose and remove from cistern casing slot.



3. Disengage plastic clip from rear wall.



4. Slide inlet valve assembly out of cistern.

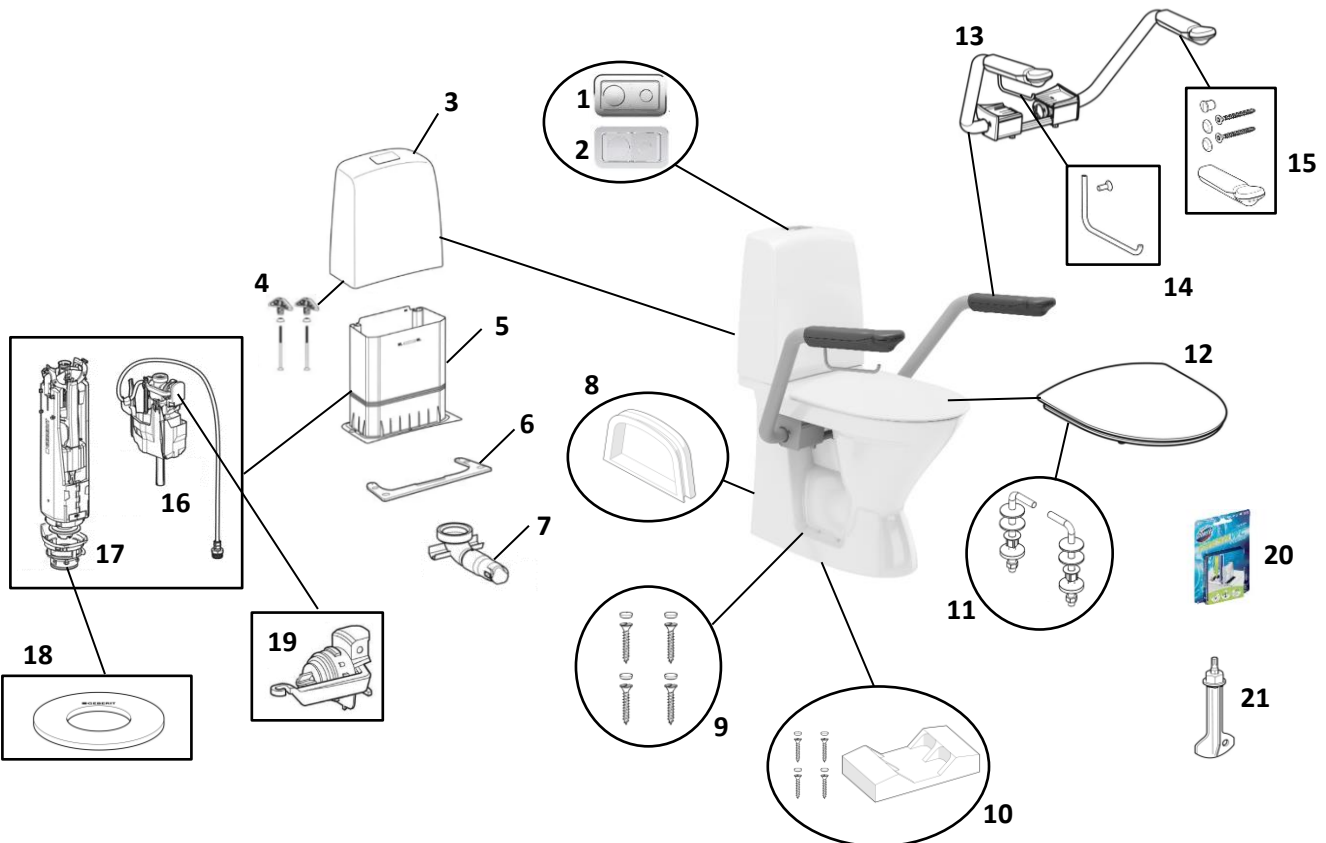
Reinstall inlet valve by following above process in reverse.

6 TROUBLESHOOTING

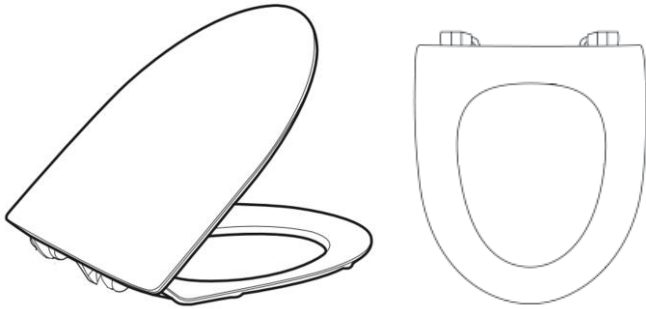
PROBLEM	CAUSE	RECTIFICATION
Blockages or toilet not flushing	Offset pan collars	Do not use offset pan collars with this item as they restrict outlet flow.
Continuous water flow into the toilet bowl	Inlet valve arm failure	Replace the inlet valve assembly (244.901.00.1) or inlet valve arm (243.801.00.1).
	Outlet valve seal is worn out or damaged	Replace the outlet valve seal (816.418.00.1).
Leakage between the cistern and the toilet pan	Water Distributer is detached from cistern tank or is missing	Remove the ceramic cistern cover, ensure Water Distributer (Z98512) is fitted correctly to cistern tank and black rubber seal is intact. Replace if damaged.
Leakage at the water inlet connection to the cistern	Inlet connection is not properly sealed	Check hose connection is not damaged and is correctly tightened. Use loose nut connector if required.

7 SPARE PARTS

No.	Item Code	Description
1	Z97251	Ifo Spira Dual Flush Button - Chrome
2	502.616.21.1	Ifo Spira Dual Flush Button Raised - Chrome
3	Z90710	Ifo Spira Ceramic Shroud Cover
4	Z98949	Ifo Cistern Fixing Screw & Clip (Pair)
5	Z97202	Ifo Spira Inner Cistern Tank with Seal
6	Z97230	Ifo Spira Cistern Gasket Foam Seal
7	Z98512	Ifo Spira Flush Water Distributer
8	712782	Ifo Rubber Cover to Suit Spira Toilet
9	245.447.00.1	Ifo Pan Screw and Caps Kit (8pcs)
10	108.99.02.90	Floor Mounting Bracket Kit for Ifo Toilet
11	BD1999	Pressalit Hinge Replacement Kit
12	-	Seat (See 7.1 Seat Variants)
13	-	Support Arms (See 7.1 Support Arm Variants)
14	245.453.00.1	Ifo Handle for Armrests with Fastening Material
15	502.341.00.1	Ifo Toilet Roll Holder for Armrests with Fastening Material
16	244.901.00.1	Ifo Spira Fill Valve, Typ 333, AG, 1/2"
17	244.903.00.1	Ifo Spira Flush Valve, Typ 245, Adjustable
18	816.418.00.1	Ifo Outlet Valve Seal
19	243.801.00.1	Ifo Inlet Valve Arm & Seal
20	94690	Ifo Fresh Sticks, Suits Spira/Sign Toilets (5 Pcs) - Blue
21	Z91960	Ifo Cistern Key with Hex & T25 Torx




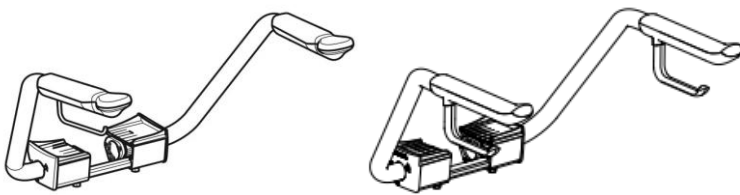
7.1 SEAT AND SUPPORT ARM VARIANTS



12 - Seat Options

Item Code	Description	Colour
99492	Ifo Double Flap Toilet Seat for Spira 6261, Quick Release – White*	
99496	Ifo Double Flap Toilet Seat for Spira 6261, Quick Release – Red*	
99493	Ifo Double Flap Toilet Seat for Spira 6261, Soft-Close, Quick Release - White	
99497	Ifo Double Flap Toilet Seat for Spira 6261, Soft-Close, Quick Release - Black	
554112-BD1999	Pressalit Double Flap Grey Toilet Seat	
553112-BD1999	Pressalit Single Flap Grey Toilet Seat	
554068-BD1999	Pressalit Double Flap Bermuda Blue Toilet Seat	
553068-BD1999	Pressalit Single Flap Bermuda Blue Toilet Seat	
554108-BD1999	Pressalit Double Flap Dark Blue Toilet Seat	
553108-BD1999	Pressalit Single Flap Dark Blue Toilet Seat	
554000-BD1999	Pressalit Double Flap White Toilet Seat	
553000-BD1999	Pressalit Single Flap White Toilet Seat	
554001-BD1999	Pressalit Double Flap Black Toilet Seat	

 *Seat is not suitable for installation with support arms



13 - Support Arm Options

Item Code	Description
502.299.00.1	Ifo Armrests, Tilttable, Suits Spira/Sign Toilets with Single Toilet Roll Holder
R1192112	Pressalit Support Arms with Dual Toilet Roll Holders & No Nurse Call
R1194112	Pressalit Support Arms with Dual Toilet Roll Holders & Left Hand Nurse Call
R1193112	Pressalit Support Arms with Dual Toilet Roll Holders & Right Hand Nurse Call

8 KIT CODES MATRIX

	Ifo Spira 6261 Toilet	Raised Flush Button	Rubber Back Cover	Floor Bracket	Ifo Support Arms	Pressalit Support Arms No Nurse Call	Pressalit Support Arms LH Nurse Call	Pressalit Support Arms RH Nurse Call	Ifo Double Flap Toilet Seat - White	Ifo Double Flap Toilet Seat - Soft-Close White	Ifo Double Flap Toilet Seat - Red	Ifo Double Flap Toilet Seat - Soft-Close Black	Pressalit Double Flap Toilet Seat - Grey	Pressalit Double Flap Toilet Seat - Bermuda Blue	Pressalit Double Flap Toilet Seat - Black	Pressalit Double Flap Toilet Seat - Matt Black	Pressalit Double Flap Toilet Seat - Dark Blue	Pressalit Single Flap Toilet Seat - Grey	Pressalit Single Flap Toilet Seat - Bermuda Blue	Pressalit Double Flap Toilet Seat - White	Pressalit Single Flap Toilet Seat - White	Pressalit Single Flap Toilet Seat - Dark Blue	
108.00.03.00	•	•	•	•					•														
108.00.02.00	•	•	•	•						•													
108.00.03.20	•	•	•	•							•												
108.00.02.10	•	•	•	•								•											
108.00.12.10	•	•	•	•	•							•											
108.00.12.00	•	•	•	•	•					•													
108.00.01.30	•	•	•	•									•										
108.00.11.30	•	•	•	•	•								•										
108.00.21.30	•	•	•	•		•							•										
108.00.31.30	•	•	•	•			•						•										
108.00.41.30	•	•	•	•				•					•										
108.00.01.40	•	•	•	•										•									
108.00.21.40	•	•	•	•		•								•	•								
108.00.31.40	•	•	•	•			•							•	•								
108.00.41.40	•	•	•	•				•						•									
108.00.01.10	•	•	•	•											•								
108.00.21.10	•	•	•	•		•									•	•							
108.00.31.10	•	•	•	•			•								•	•							
108.00.41.10	•	•	•	•				•							•								
108.00.01.60	•	•	•	•												•							
108.00.21.60	•	•	•	•		•										•	•						
108.00.31.60	•	•	•	•			•									•	•						
108.00.41.60	•	•	•	•				•								•	•						
108.00.01.50	•	•	•	•												•							
108.00.21.50	•	•	•	•		•										•	•						
108.00.31.50	•	•	•	•			•									•	•						
108.00.41.50	•	•	•	•				•								•	•						
108.00.00.30	•	•	•	•													•						
108.00.20.30	•	•	•	•		•											•						
108.00.30.30	•	•	•	•			•										•						
108.00.40.30	•	•	•	•				•									•						
108.00.00.40	•	•	•	•														•					
108.00.20.40	•	•	•	•		•												•					
108.00.30.40	•	•	•	•			•											•					
108.00.40.40	•	•	•	•				•										•					
626100009																							
502.616.21.1																							
712782																							
108.99.02.90																							
502.299.00.1																							
R1192112																							
R1193112																							
R1194112																							
99492																							
99493																							
99496																							
99497																							
554112-BD1999																							
554068-BD1999																							
554001-BD1999																							
554231-BD1999																							
554108-BD1999																							
553112-BD1999																							
553068-BD1999																							
554000-BD1999																							
553000-BD1999																							
553108-BD1999																							

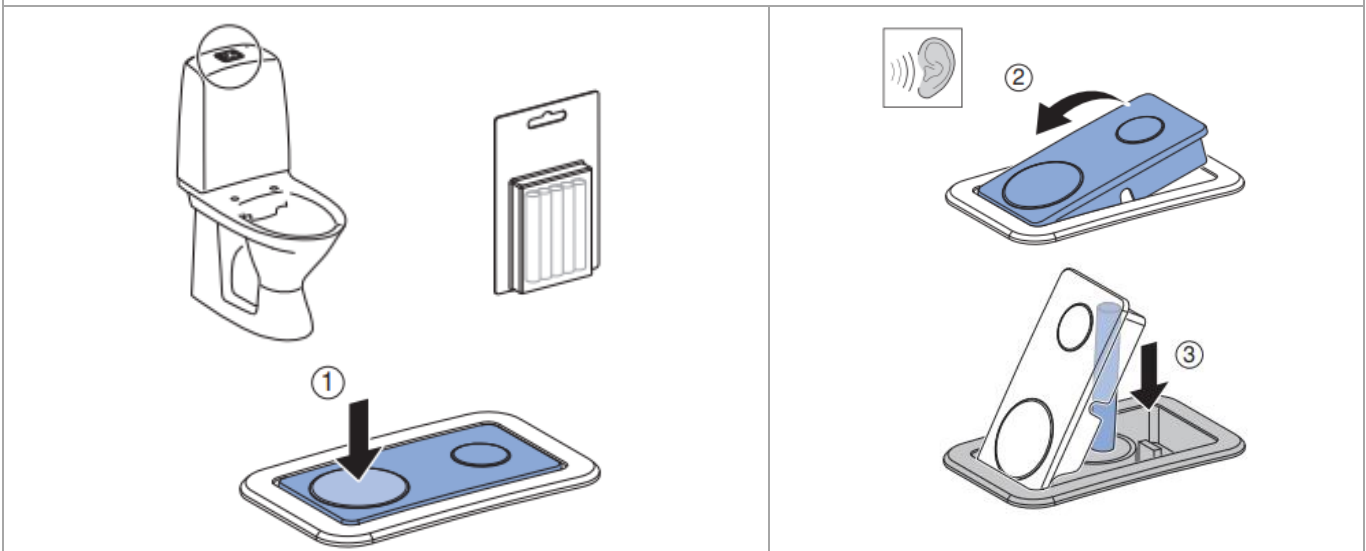
Not currently available in kits
Contact Galvin Engineering to order

9 CARE INSTRUCTIONS

9.1 GENERAL CARE INSTRUCTIONS

- For detailed cleaning instructions, refer to individual product documentation.
- Toilet bowl must be cleaned regularly using mild cleaning agents and water.
- Never use sharp or pointed objects or abrasive equipment (e.g. steel wool) when cleaning as these can scratch the glazed surfaces.
- Remove any substances containing solvents immediately after application.
- Do not use chemical cleaning agents on the flush button or seats as these can damage plastic components. Use hot water and soap and wipe dry using a soft, lint-free cloth.
- Unless there are heavy deposits/dirt, never use cleaning agents that are:
 - Abrasive or may scratch the surface
 - Contain chlorine or acids that are corrosive

9.2 INSTALLING IFO FRESH STICKS



1. Open the flush button via the hinge mechanism. Install one fresh stick (item 94690) into the centre of the cover screw rod.



Note: Only Ifo branded Fresh WC Sticks are approved for use in this product.

10 WARRANTY

Galvin Engineering products are covered under our Manufacturer's Warranty. Galvin Engineering products must be installed in accordance with the installation instructions and in accordance with AS 3500 and NCC Volume Three, relevant Australian Standards and local authorities applicable to product being installed. Water and electrical supply conditions must also comply to the applicable national and/or state standards, failing to comply with these provisions may void the product warranty and affect performance of the product.

Please visit www.galvinengineering.com.au to view the full warranty, our Installation Compliance and Maintenance & Cleaning information as well as any other additional information.

Within Australia: 1300 514 074 Outside Australia: P: +61 (0)8 9338 2344

F: +61 (0)8 9338 2340

sales@galvinengineering.com.au

www.galvinengineering.com.au

ABN: 78 008 719 382

PERTH | SYDNEY | MELBOURNE | BRISBANE | ADELAIDE

